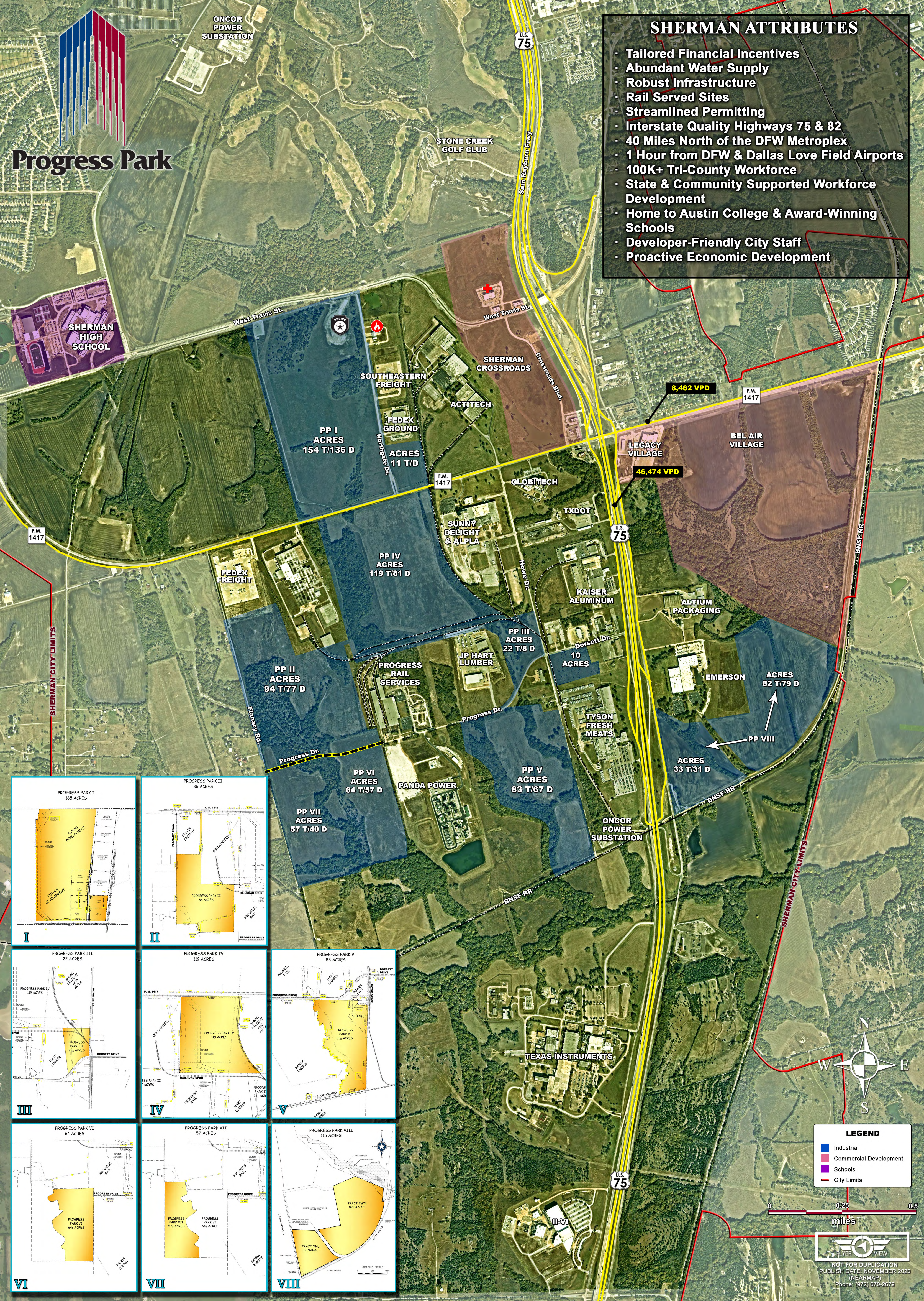


SHERMAN ATTRIBUTES

- Tailored Financial Incentives
- Abundant Water Supply
- Robust Infrastructure
- Rail Served Sites
- Streamlined Permitting
- Interstate Quality Highways 75 & 82
- 40 Miles North of the DFW Metroplex
- 1 Hour from DFW & Dallas Love Field Airports
- 100K+ Tri-County Workforce
- State & Community Supported Workforce Development
- Home to Austin College & Award-Winning Schools
- Developer-Friendly City Staff
- Proactive Economic Development

Progress Park



SHERMAN HIGH SCHOOL

STONE CREEK GOLF CLUB

SHERMAN CROSSROADS

SOUTHEASTERN FREIGHT

ACTITECH

FEDEX GROUND

PP I ACRES 154 T/136 D

ACRES 11 T/D

8,462 VPD

46,474 VPD

GLOBTECH

SUNNY DELIGHT & ALPLA

TXDOT

PP IV ACRES 119 T/81 D

FEDEX FREIGHT

KAISER ALUMINUM

ALTIUM PACKAGING

PP II ACRES 94 T/77 D

PROGRESS RAIL SERVICES

JP HART LUMBER

PP III ACRES 22 T/8 D

10 ACRES

EMERSON

ACRES 82 T/79 D

PP VIII

PP VI ACRES 64 T/57 D

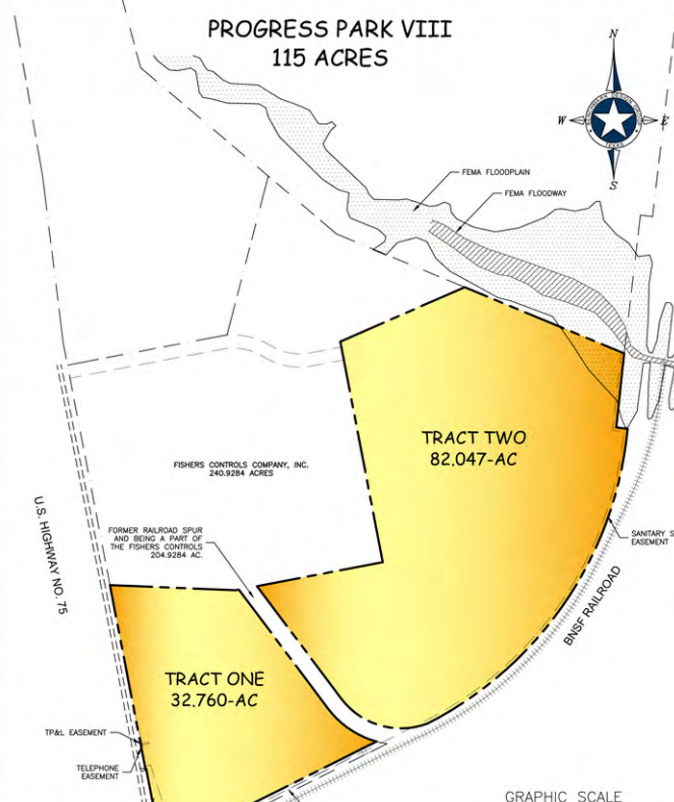
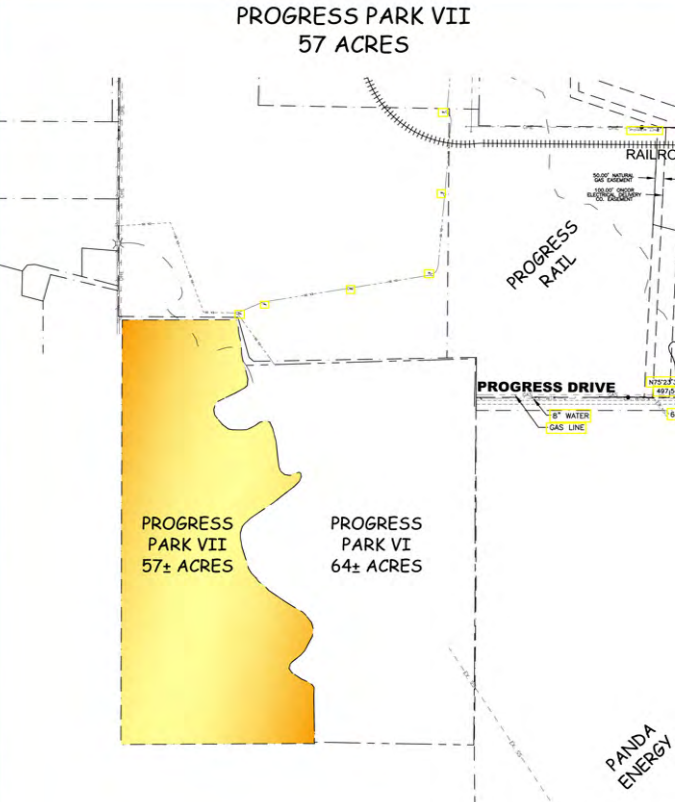
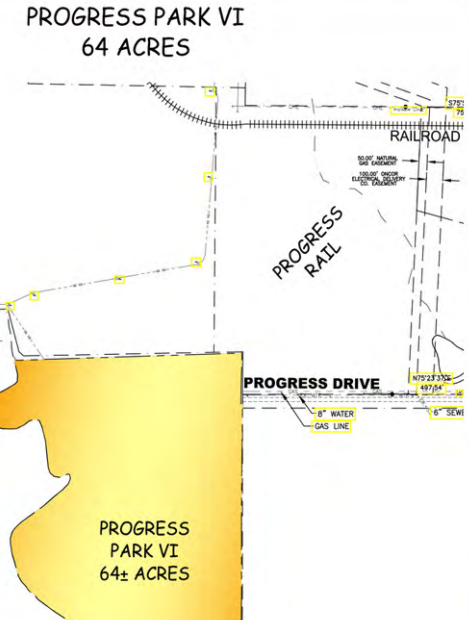
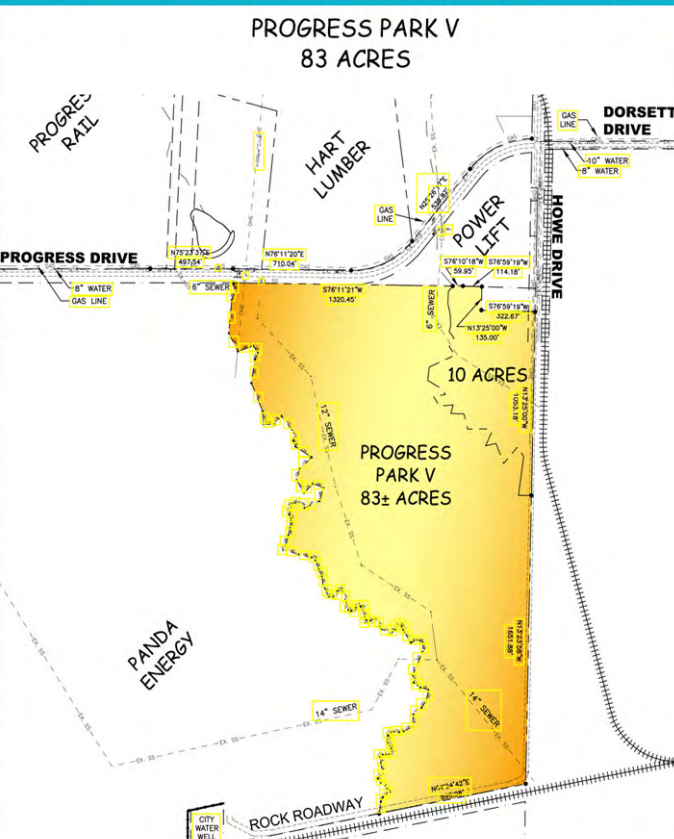
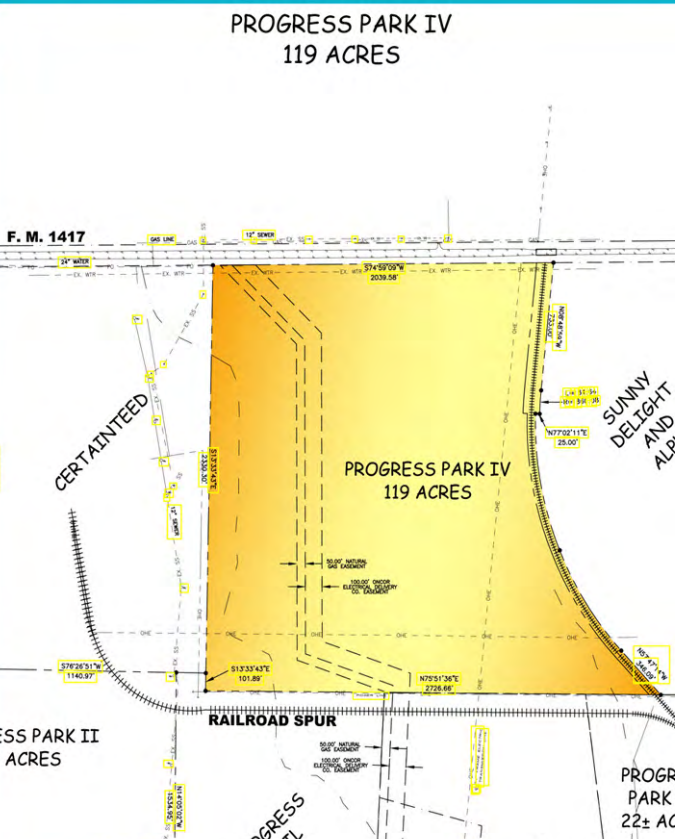
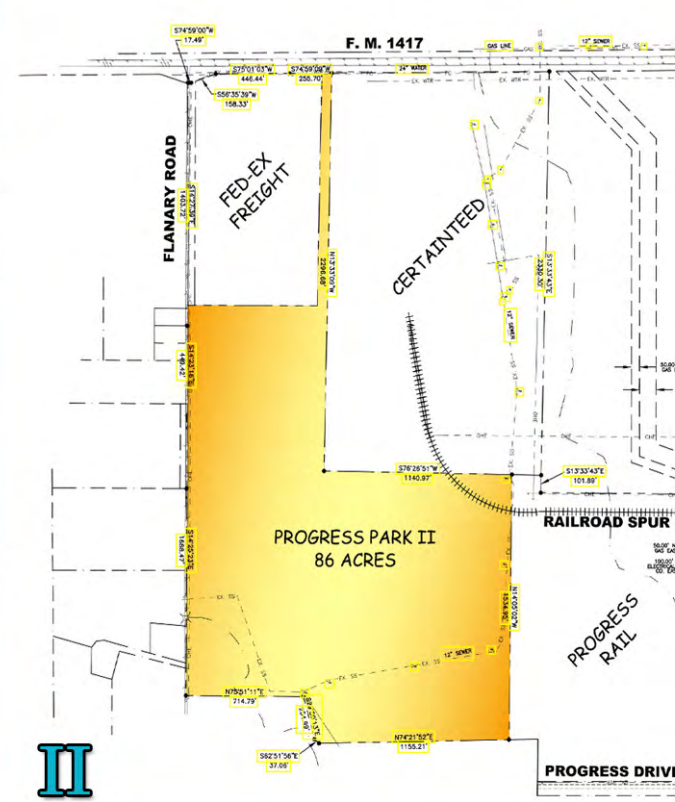
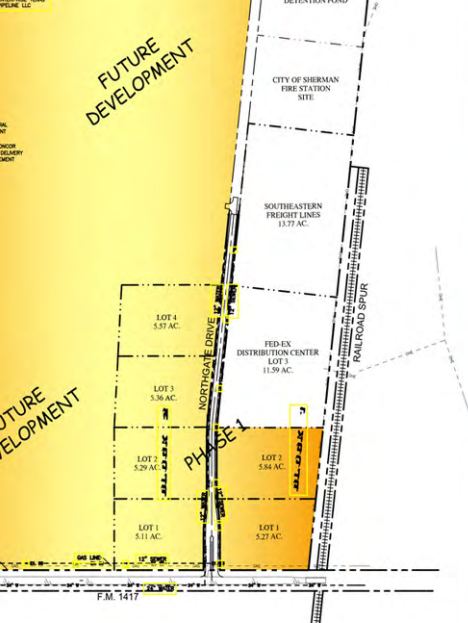
PANDA POWER

PP V ACRES 83 T/67 D

ONCOR POWER SUBSTATION

PROGRESS PARK I 165 ACRES

PROGRESS PARK II 86 ACRES



LEGEND

- Industrial
- Commercial Development
- Schools
- City Limits



NGT FOR DUPLICATION
PUBLISH DATE: NOVEMBER 2020
(NEARMAP)
Phone: (972) 670-2679